



JAR-251 Elevador Electrohidráulico de tijera, Trifásico

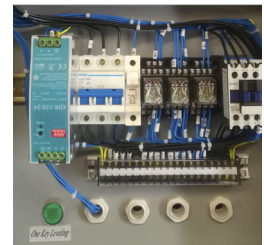
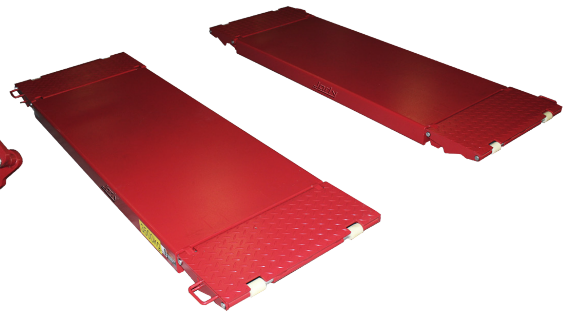
Electrohydraulic scissor lift, Three-phase

JAR-251/MONO Elevador Electrohidráulico de tijera, Monofásico

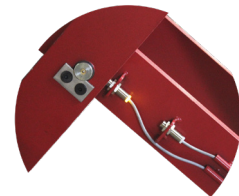
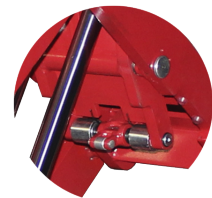
Electrohydraulic scissor lift, Monophase



3500 Kg



- Capacidad - Capacity Kg 3500
- Motor Trifásico - Three phase Capacity 2,2 Kw -3ph
- Motor Monofásico - Monophase Capacity 2,2 Kw 1ph
- Voltaje 3ph- Voltage 3ph 400/230 V 50/60 hz
- Voltaje 1ph- Voltage 1ph 230 V 50/60 hz
- Tiempo de subida - Raising time $\pm 60''$ seg
- Tiempo de bajada - Lowering time $\pm 60''$ seg
- Peso - Weight 875 Kg



- Sistema de bloqueo y sincronización de bajada, patentado
- Control electrohidráulico de realineación de plataformas
- Rampas abatibles con seguro mecánico
- Construido siguiendo con la directiva 2006/42/CE "Seguridad de máquinas" con sus respectivas modificaciones.

- Patented lowered locking and synchronization system
- Electrohydraulic control of platform realignment
- Folding ramps with mechanical lock
- Built following the directive 2006/42 / CE "Machine safety" with their respective modifications

